

CITY OF KINGSTON INTERMODAL FACILITY

SITE LOCATION & CONCEPTUAL DESIGN ANALYSIS

Information Meeting, December 10, 2009

Uptown Garage Site Addendum



AGENDA

- Introductions and Opening Remarks
- Project Description & History
 - Preliminary Location Studies
 - Evaluation Criteria
 - Evaluation Recommendations
 - Conceptual Design- Site 8 Washington/Sawkill
- Conceptual Design- Site 14 Uptown Garage
- Revised Evaluation Recommendations
- Public Comment / Input
- Concluding Remarks/Next Steps
- Contact Information



CITY OF KINGSTON INTERMODAL FACILITY
SITE LOCATION & CONCEPTUAL DESIGN ANALYSIS



PROJECT DESCRIPTION & HISTORY

- UCTC “2030 Long Range Transportation Plan” and “Ulster County Fixed Route Public Transportation Coordination and Intermodal Opportunities Analysis” recommended a new Intermodal Facility in Kingston.
- The intent is to create a Facility that will serve intercity bus operations and the local public transit service. It will be the central transfer point between all transportation modes and users, including buses, pedestrians, bicyclists, taxi cabs, Kiss & Ride users and shuttle services.



CITY OF KINGSTON INTERMODAL FACILITY
SITE LOCATION & CONCEPTUAL DESIGN ANALYSIS



PROJECT DESCRIPTION & HISTORY

Why a New Intermodal Center?

- Enhance the public’s mobility and access throughout the City, County and surrounding region.
- Significant amount of people depend on public transportation as their only available option.
- Safety and Protection
- Economic Drivers
- Urban Centers/People Places



CITY OF KINGSTON INTERMODAL FACILITY
SITE LOCATION & CONCEPTUAL DESIGN ANALYSIS



PROJECT DESCRIPTION & HISTORY

- In 2006, Wendel Duchscherer was selected by the County to perform a location study for the new Intermodal Center.
- The draft version of this study was completed and available for public review and comment end of 2008.
- Public comments and input are part of the process and important to the project's success. Four Public Information Meetings held to date:
 - January 30, 2007
 - September 25, 2007
 - January 29, 2008
 - September 23, 2008
- The entire process is governed by federal requirements – The Federal Transit Association and the Federal Highway Administration.



CITY OF KINGSTON INTERMODAL FACILITY
SITE LOCATION & CONCEPTUAL DESIGN ANALYSIS



PROJECT DESCRIPTION & HISTORY

Transit Advisory Committee

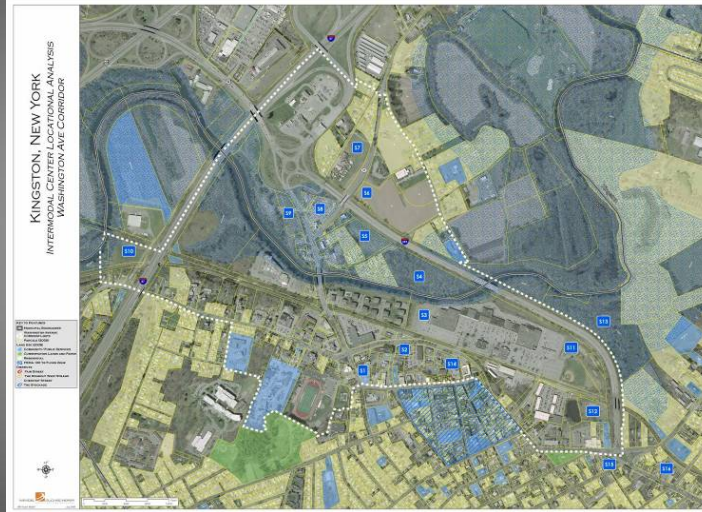
Dennis Doyle	<i>Ulster County Planning Board</i>
William Tobin	<i>Ulster County Transportation Council (UCTC)</i>
Joel Brink	<i>Town of Ulster – Councilman</i>
James Sottile	<i>City of Kingston, Mayor</i>
Stephen Finkle	<i>City of Kingston</i>
Susan Cahill	<i>City of Kingston, City Planner</i>
Toni Roser	<i>Citibus</i>
Robert DiBella	<i>UCAT</i>
Mark Boungard	<i>Trailways</i>
David Markowitz	<i>NYSDOT</i>
Richard Peters	<i>NYSDOT</i>
Thomas Hoffay	<i>Alderman</i>



CITY OF KINGSTON INTERMODAL FACILITY
SITE LOCATION & CONCEPTUAL DESIGN ANALYSIS



PROJECT DESCRIPTION & HISTORY PRELIMINARY LOCATION STUDIES



CITY OF KINGSTON INTERMODAL FACILITY
SITE LOCATION & CONCEPTUAL DESIGN ANALYSIS

WENDEL DUCHSCHERER
ARCHITECTS & ENGINEERS

PROJECT DESCRIPTION & HISTORY PRELIMINARY LOCATION STUDIES

Site Designation	Site Location
S1	Existing Terminal with Platers Company
S2	Former Sheriff's Office and car dealership
S3	Hannaford Plaza – West end
S4	Vacant site south of I-587 between Sandy Rd. and Esopus Creek
S5	Undeveloped Site
S6	Field at N.E. intersection of I-587 and Sawkill Rd.
S7	Vehicle Repair shop at N.E. intersection of I-587 and Sawkill Rd.
S8	Washington Ave./Sawkill Rd.
S9	Existing Visitors Center
S10	Undeveloped site south of Trailways Maintenance Shop
S11	Hannaford Plaza – East end
S12	Lily Pond of Kingston
S13	Dock Street Assoc. site, North of I-587
S14	Uptown Parking Garage
S15	Broadway and I-587 between Sandy Rd. and Powell Lane
S16	WKNY



CITY OF KINGSTON INTERMODAL FACILITY
SITE LOCATION & CONCEPTUAL DESIGN ANALYSIS

WENDEL DUCHSCHERER
ARCHITECTS & ENGINEERS

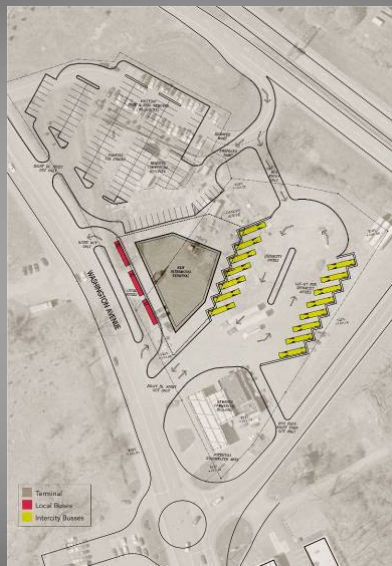
S1 Opt 3 Rev 1: WASHINGTON AVE. & FRONT ST. SITE



CITY OF KINGSTON INTERMODAL FACILITY
SITE LOCATION & CONCEPTUAL DESIGN ANALYSIS



S8: WASHINGTON AVE. SITE



CITY OF KINGSTON INTERMODAL FACILITY
SITE LOCATION & CONCEPTUAL DESIGN ANALYSIS



S11 Opt 5: HANNAFORD PLAZA SITE



CITY OF KINGSTON INTERMODAL FACILITY
SITE LOCATION & CONCEPTUAL DESIGN ANALYSIS



PROJECT DESCRIPTION & HISTORY EVALUATION CRITERIA

ALTERNATIVE EVALUATION CRITERIA									
Assigned Weight (Proportional Importance)									
CRITERIA	CitiBus	City of Kingston	NYS DOT	UCAT	Trailways	Ulster County Planning	Totals	Average	Rank
On-site transit operations	10	15	10	14	15	15	79	13.2	4
Vehicle access	15	10	10	21	15	10	81	13.5	3
On-site pedestrian access	10	10	15	9	0	7	51	8.5	5
Viable infrastructure	5	5	10	6	5	10	41	6.8	7
Environmental issues	10	5	5	5	5	10	40	6.7	8
Compatibility w/ strategic plans	5	5	5	3	0	5	23	3.8	10
Intermodal connectivity	20	20	15	16	25	20	116	19.3	1
Construction readiness	0	0	5	4	0	3	12	2.0	11
Community Impact	10	10	10	3	0	10	43	7.2	6
Enhances image of transportation	10	5	5	2	5	0	27	4.5	9
Parking	5	15	10	17	30	10	87	14.5	2
Total	100	100	100	100	100	100			



CITY OF KINGSTON INTERMODAL FACILITY
SITE LOCATION & CONCEPTUAL DESIGN ANALYSIS



PROJECT DESCRIPTION & HISTORY EVALUATION RECOMMENDATIONS

<u>Comprehensive Alternative Evaluation Matrix</u>			
Kingston Intermodal Facility			
WEIGHT/SITES			
	Site No. 1 - Existing Terminal	Site No. 8 - Washington Ave Site	Site No. 11 - Plaza (East End)
TOTAL SITE PERFORMANCE	350.96	389.16	418.09
RANKING	3	2	1

- The scores for the Trailways, Plaza and Washington Ave./Sawkill Rd. sites are close enough for all to be considered viable locations for the Intermodal Facility.



CITY OF KINGSTON INTERMODAL FACILITY
SITE LOCATION & CONCEPTUAL DESIGN ANALYSIS



PROJECT DESCRIPTION & HISTORY EVALUATION RECOMMENDATIONS

- Though a strong contender, the costs and time associated with constructing access and exit ramps to I-587 led the TAC to recommend that the Trailways and Washington Ave/ Sawkill Road sites be advanced for further study at the end of 2008.
- In the time since the draft report was finalized last year, site S1 at Washington and Front Street was no longer available.
- Site S14 Uptown Parking Garage with the loss of a proposed development and removal of the parking garage was requested by the TAC to be reconsidered as a location. Wendel Duchscherer's contract was extended to include the Uptown Garage Site and provide a consistent analysis of the alternatives.
- We are here today to present the Uptown Parking Garage Study which will be included as an addendum to the draft version of the overall study.



CITY OF KINGSTON INTERMODAL FACILITY
SITE LOCATION & CONCEPTUAL DESIGN ANALYSIS



PROJECT DESCRIPTION & HISTORY

CONCEPTUAL DESIGN- SITE S8 Washington/Sawkill

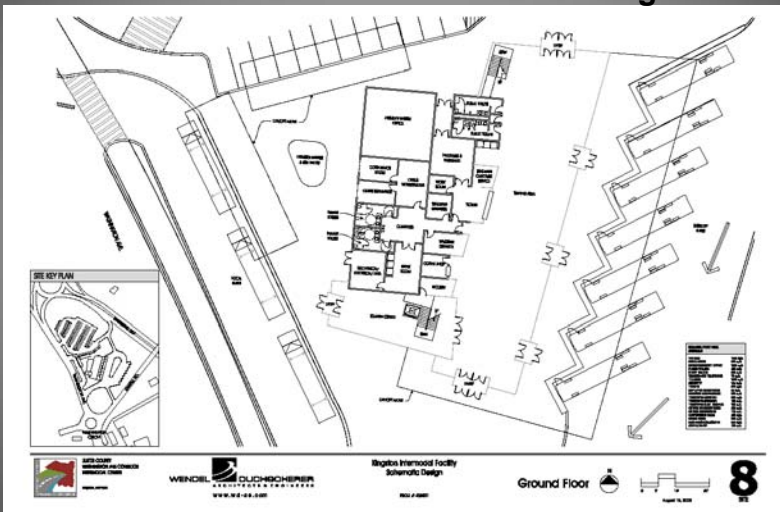


CITY OF KINGSTON INTERMODAL FACILITY
SITE LOCATION & CONCEPTUAL DESIGN ANALYSIS



PROJECT DESCRIPTION & HISTORY

CONCEPTUAL DESIGN- SITE S8 Washington/Sawkill



CITY OF KINGSTON INTERMODAL FACILITY
SITE LOCATION & CONCEPTUAL DESIGN ANALYSIS



PROJECT DESCRIPTION & HISTORY

CONCEPTUAL DESIGN- SITE S8 Washington/Sawkill



CITY OF KINGSTON INTERMODAL FACILITY
SITE LOCATION & CONCEPTUAL DESIGN ANALYSIS



PROJECT DESCRIPTION & HISTORY

CONCEPTUAL DESIGN- SITE S8 Washington/Sawkill



CITY OF KINGSTON INTERMODAL FACILITY
SITE LOCATION & CONCEPTUAL DESIGN ANALYSIS



PROJECT DESCRIPTION & HISTORY
CONCEPTUAL DESIGN- SITE S8 Washington/Sawkill



CITY OF KINGSTON INTERMODAL FACILITY
SITE LOCATION & CONCEPTUAL DESIGN ANALYSIS



PROJECT DESCRIPTION & HISTORY
CONCEPTUAL DESIGN- SITE S8 Washington/Sawkill



CITY OF KINGSTON INTERMODAL FACILITY
SITE LOCATION & CONCEPTUAL DESIGN ANALYSIS



CONCEPTUAL DESIGN- SITE S14 Uptown Garage

SUSTAINABILITY

- Green Roof / Cisterns (storm water mitigation)
- Daylighting
- Photovoltaics
- Recycled content materials
- Low emitting materials
- Bicycle Storage
- Smart cars
- Heat island mitigation (trees)
- Natural ventilation/operable windows



CITY OF KINGSTON INTERMODAL FACILITY
SITE LOCATION & CONCEPTUAL DESIGN ANALYSIS



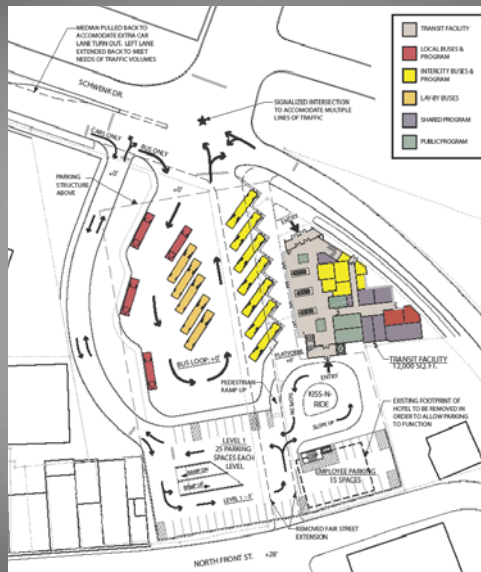
CONCEPTUAL DESIGN- SITE S14 Uptown Garage



CITY OF KINGSTON INTERMODAL FACILITY
SITE LOCATION & CONCEPTUAL DESIGN ANALYSIS



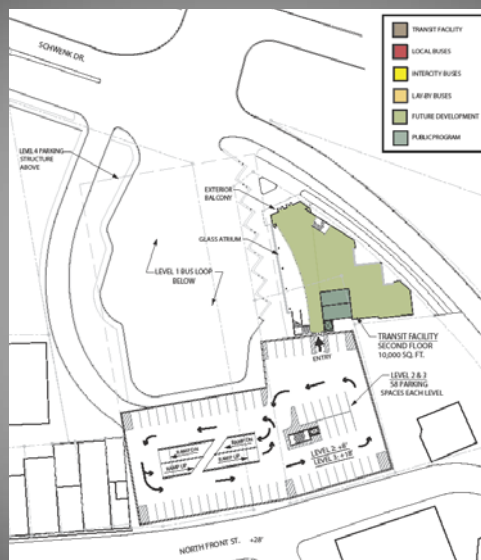
CONCEPTUAL DESIGN- SITE S14 Uptown Garage Site Plan Level 1



CITY OF KINGSTON INTERMODAL FACILITY
SITE LOCATION & CONCEPTUAL DESIGN ANALYSIS



CONCEPTUAL DESIGN- SITE S14 Uptown Garage Site Plan Levels 2 & 3



CITY OF KINGSTON INTERMODAL FACILITY
SITE LOCATION & CONCEPTUAL DESIGN ANALYSIS



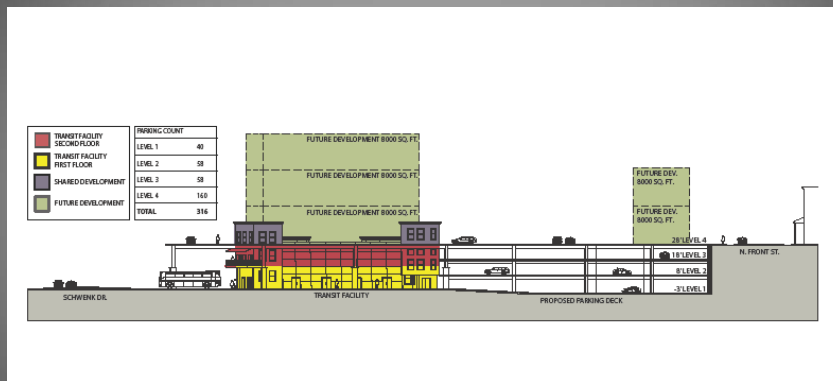
CONCEPTUAL DESIGN- SITE S14 Uptown Garage Site Plan Level 4



CITY OF KINGSTON INTERMODAL FACILITY
SITE LOCATION & CONCEPTUAL DESIGN ANALYSIS



CONCEPTUAL DESIGN- SITE S14 Uptown Garage Section



CITY OF KINGSTON INTERMODAL FACILITY
SITE LOCATION & CONCEPTUAL DESIGN ANALYSIS



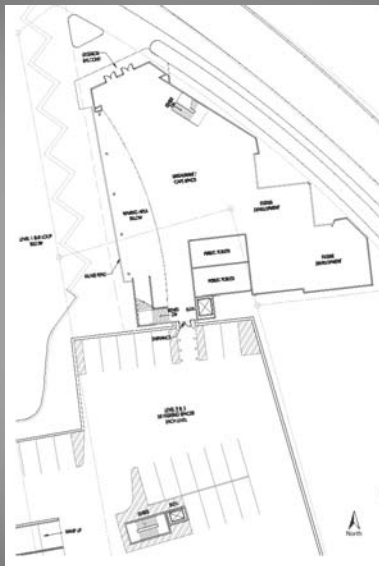
CONCEPTUAL DESIGN- SITE S14 Uptown Garage Floor Plan Level 1



CITY OF KINGSTON INTERMODAL FACILITY
SITE LOCATION & CONCEPTUAL DESIGN ANALYSIS



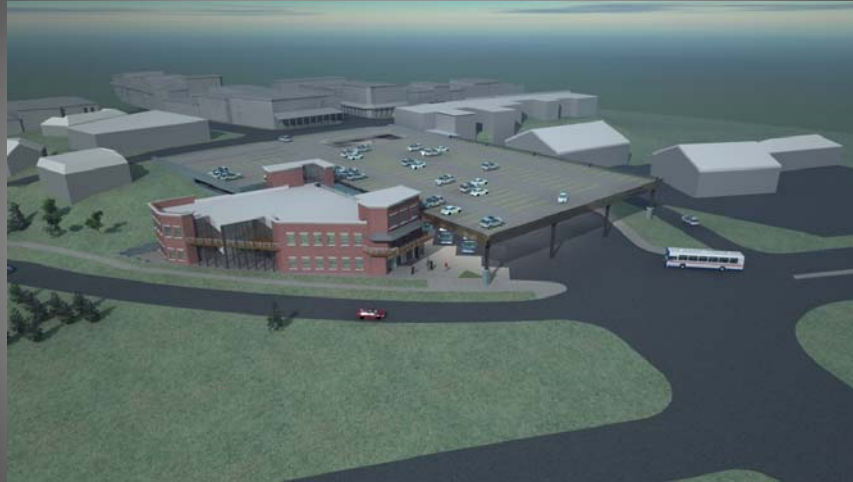
CONCEPTUAL DESIGN- SITE S14 Uptown Garage Floor Plan Levels 2



CITY OF KINGSTON INTERMODAL FACILITY
SITE LOCATION & CONCEPTUAL DESIGN ANALYSIS



CONCEPTUAL DESIGN- SITE S14 Uptown Garage



CITY OF KINGSTON INTERMODAL FACILITY
SITE LOCATION & CONCEPTUAL DESIGN ANALYSIS



CONCEPTUAL DESIGN- SITE S14 Uptown Garage



CITY OF KINGSTON INTERMODAL FACILITY
SITE LOCATION & CONCEPTUAL DESIGN ANALYSIS



CONCEPTUAL DESIGN- SITE S14 Uptown Garage



CITY OF KINGSTON INTERMODAL FACILITY
SITE LOCATION & CONCEPTUAL DESIGN ANALYSIS



CONCEPTUAL DESIGN- SITE S14 Uptown Garage Summary

Intermodal Project:

- Total parking: 316 spaces
- First Floor Transit Space: 12,000 sf
- Second Floor Shell Space: 10,000 sf
- Total Intermodal Project

 22,000 sf + 316 spaces

Future Development:

- Third-Fifth Floor Future Development: 8,000 sf / floor
- Future Development on N. Front St.: 8,000 sf / floor
- Total Future Development Opportunity

 48,000 sf



CITY OF KINGSTON INTERMODAL FACILITY
SITE LOCATION & CONCEPTUAL DESIGN ANALYSIS



REVISED EVALUATION RECOMMENDATIONS

		WEIGHT/SITES			
		Site No. 1 - Existing Terminal	Site No. 8 - Washingt on Ave Site	Site No. 11 - Plaza (East End)	Site No. 14 - Uptown Garage Site
TOTAL SITE PERFORMANCE		350.96	389.16	418.09	402.58
RANKING (* Ranking is in order of placement, one being the highest score)		4	3	1	2

Total Estimated Probable Costs

Site S1	\$7M	(site not available)
Site S8	\$9M	(includes site fill)
Site S11	\$18M to \$30M	(includes I-587 connection)
Site S14	\$32M	(\$13M for parking garage)



CITY OF KINGSTON INTERMODAL FACILITY
SITE LOCATION & CONCEPTUAL DESIGN ANALYSIS



PUBLIC COMMENT / INPUT

- What Issues are important to YOU?
- What elements/amenities should be included in the Intermodal Facility?
- What should be considered in deciding the final location of the Intermodal Facility?
- Safety Issues
- Aesthetics Issues



CITY OF KINGSTON INTERMODAL FACILITY
SITE LOCATION & CONCEPTUAL DESIGN ANALYSIS



COMMENTS, QUESTIONS & ANSWERS



CITY OF KINGSTON INTERMODAL FACILITY
SITE LOCATION & CONCEPTUAL DESIGN ANALYSIS



CONCLUDING REMARKS / NEXT STEPS

- Evaluation of Public Comments and Input
- Finalize Location Study Report and Recommendations
- Begin the Next Phase - Environmental Analysis Process
- Continue Public Input Process
- Recommend a Preferred Site and Building Design



CITY OF KINGSTON INTERMODAL FACILITY
SITE LOCATION & CONCEPTUAL DESIGN ANALYSIS



CONTACT INFORMATION

- The Draft Final City of Kingston Area Intermodal Facility Site Location and Conceptual Design Analysis Report is now available on-line :
www.co.ulster.ny.us/planning/intermodal.html
- A hard copy will be available for public review at the following locations:
UCAT Headquarters, 1 Danny Circle, Kingston
Citibus Headquarters, 17 Hoffman Street
UC Planning Department, 3rd Floor, 244 Fair Street, Kingston
- A public comment period has commenced and closes December 28, 2009.
- Please submit additional comments in writing to:
Ulster County Transportation Council
c/o: Bill Tobin
244 Fair Street
PO Box 1800
Kingston, NY 12402-1800
wtob@co.ulster.ny.us



CITY OF KINGSTON INTERMODAL FACILITY
SITE LOCATION & CONCEPTUAL DESIGN ANALYSIS



CITY OF KINGSTON INTERMODAL FACILITY
SITE LOCATION & CONCEPTUAL DESIGN ANALYSIS

